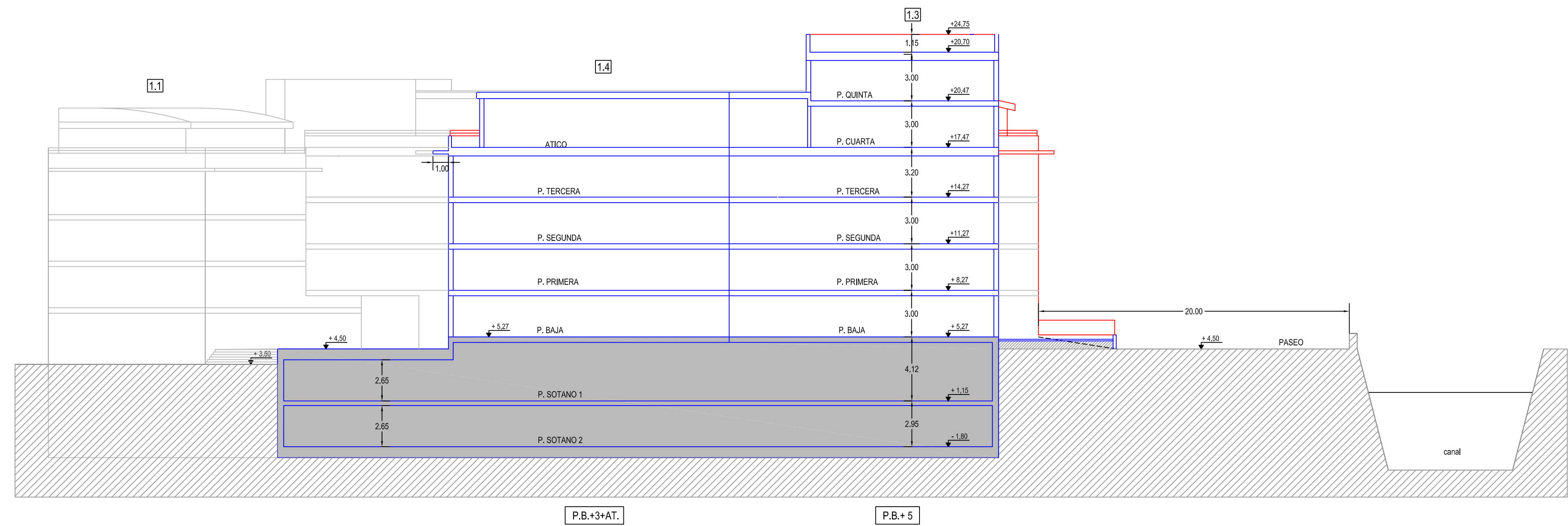
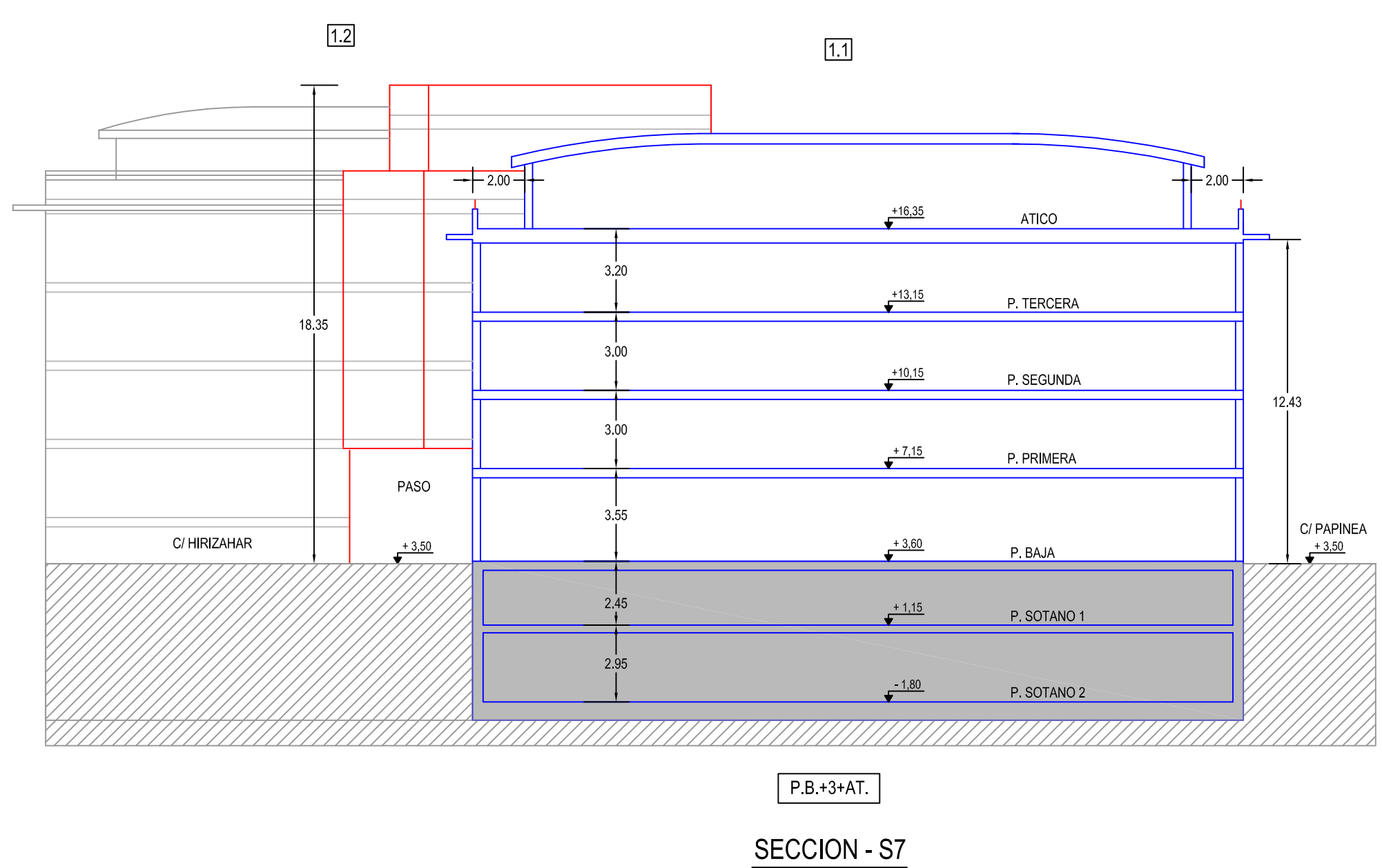


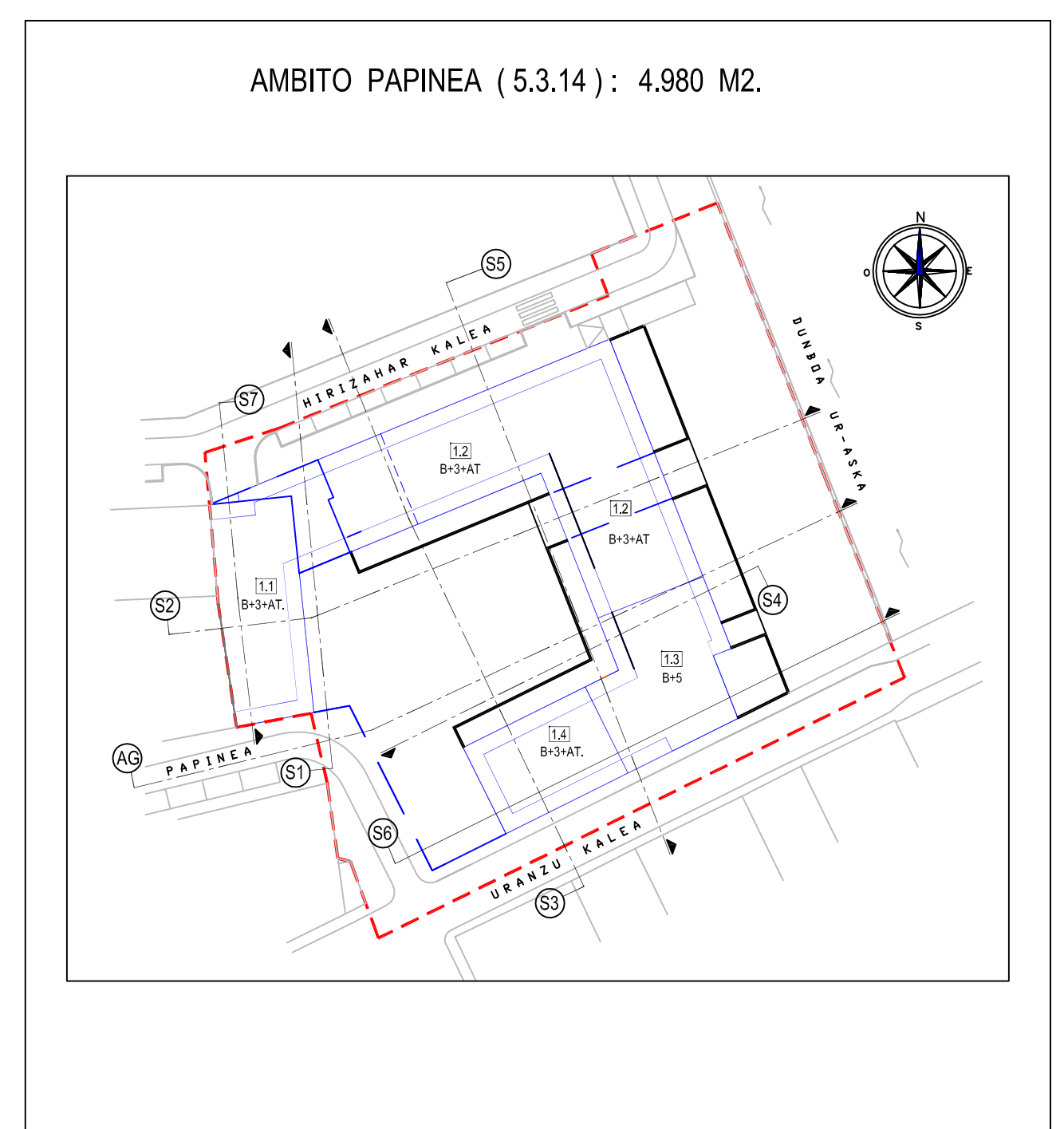
SECCION - S5



SECCION - S6



SECCION - S7



**IRUN**  
 2.008ko Otsailan  
 Febrero de 2.008

**Plan Especial de Reforma Interior en el Ambito PAPINEA (5.3.14) -T.R.**  
 sustatzailea-promotor : m. josefa moreno iribarren  
 arkitektoa- arquitecto : javier salegui chantre

**P.12**  
 PERFILES NORMATIVOS -3. ORDENACION.

1/200