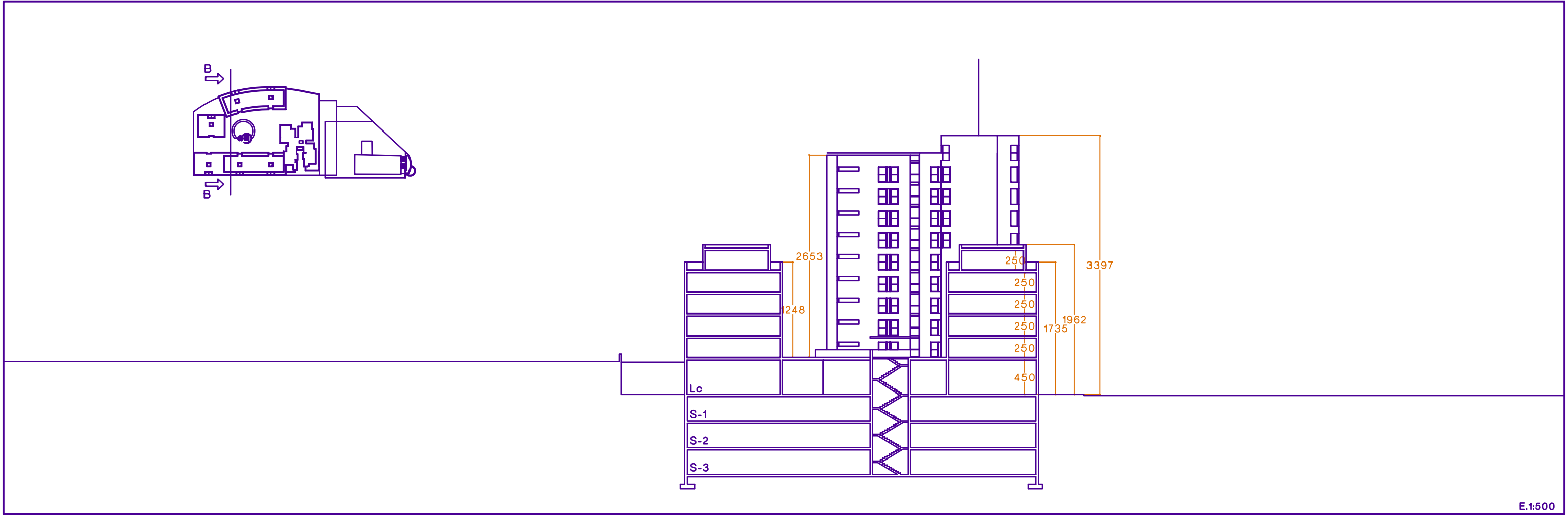
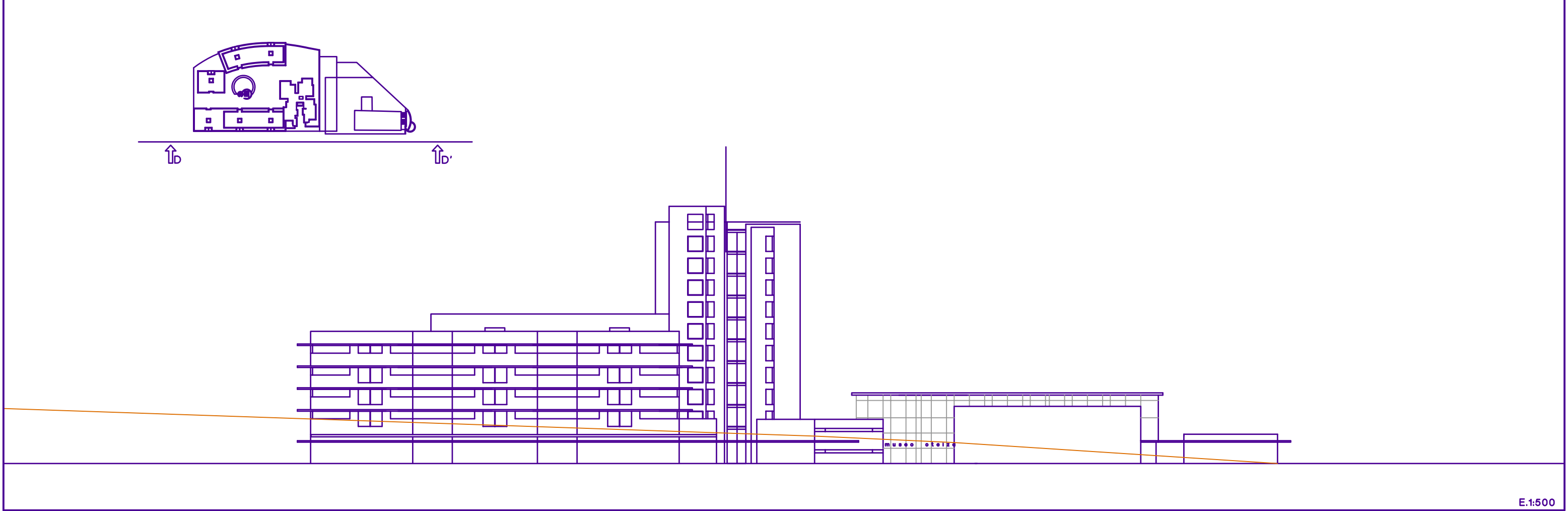


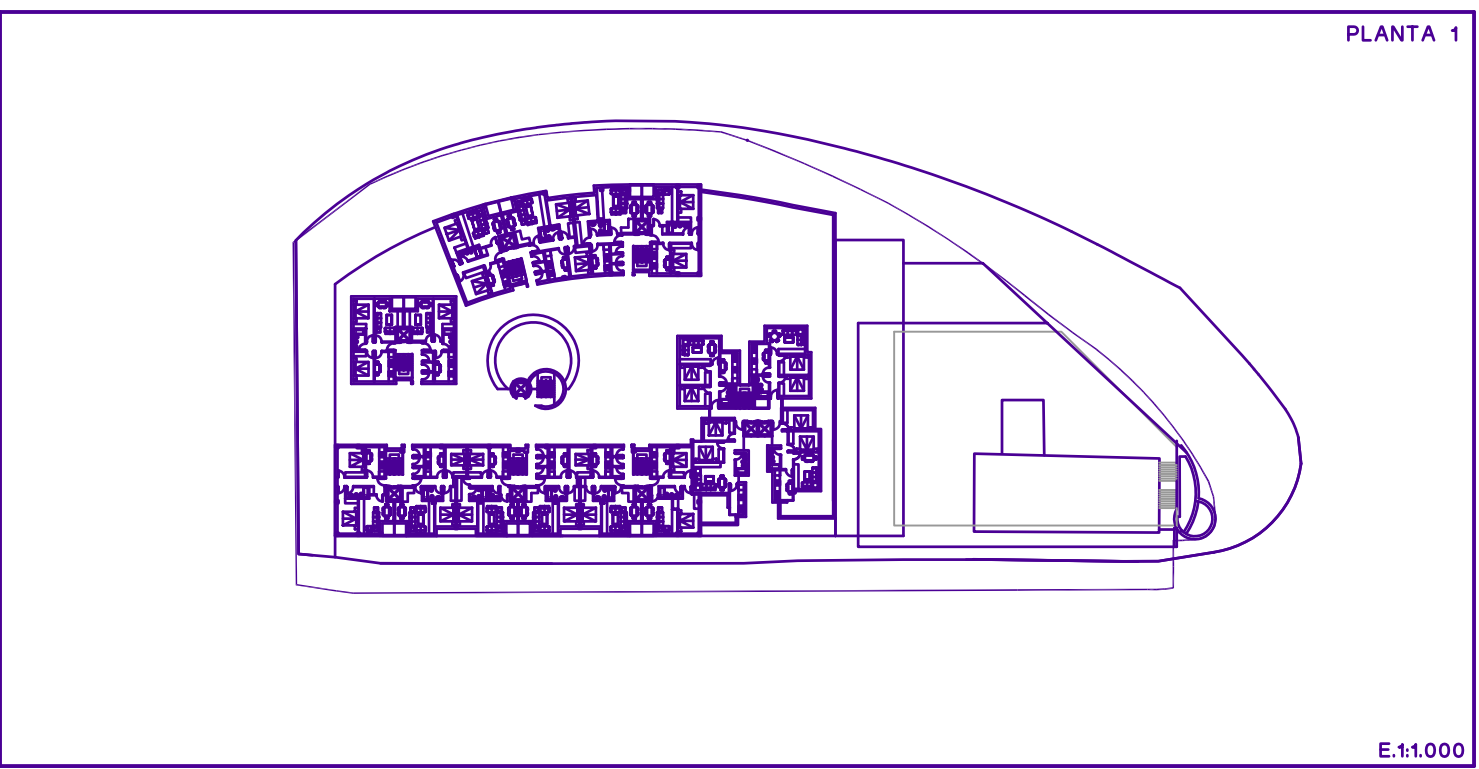
E.1:500



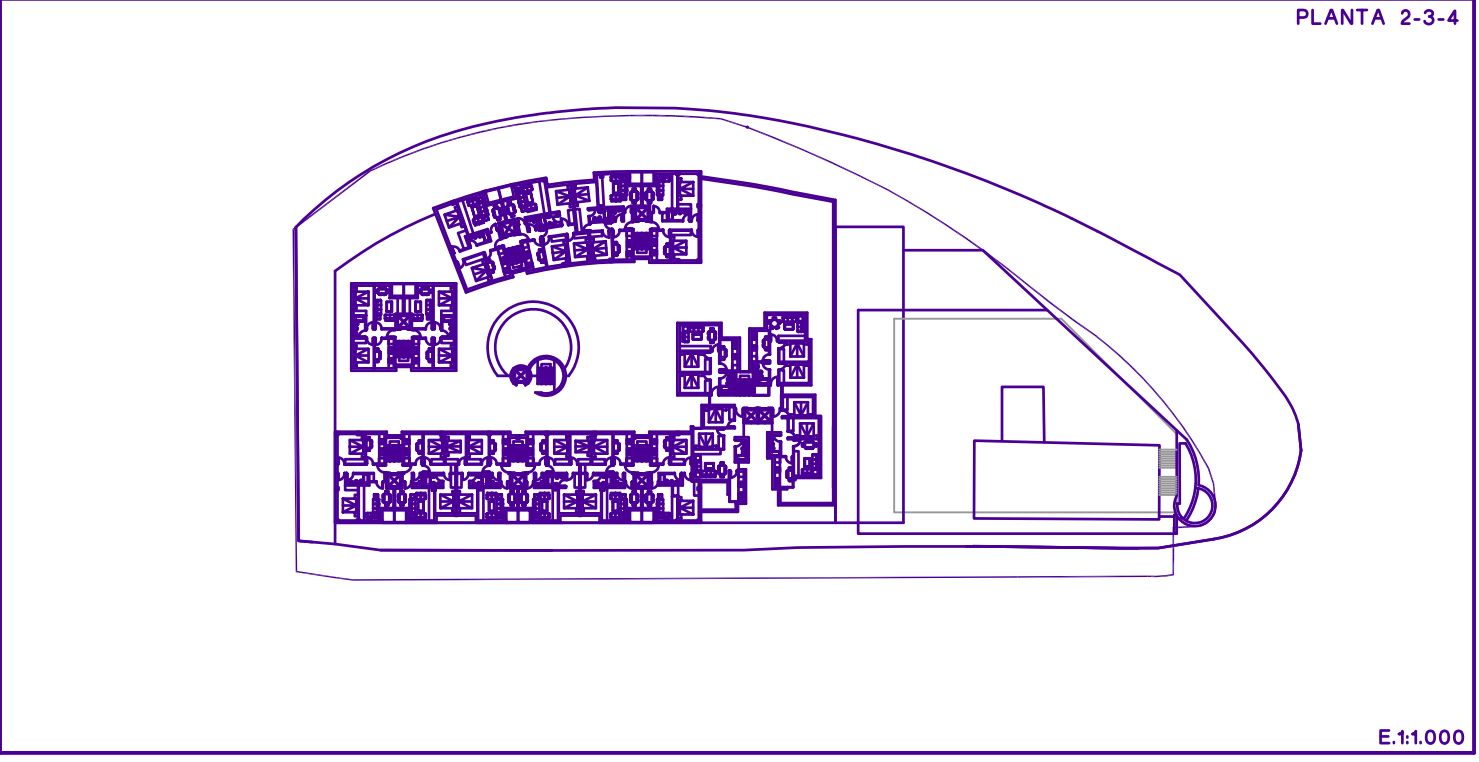
E.1:500



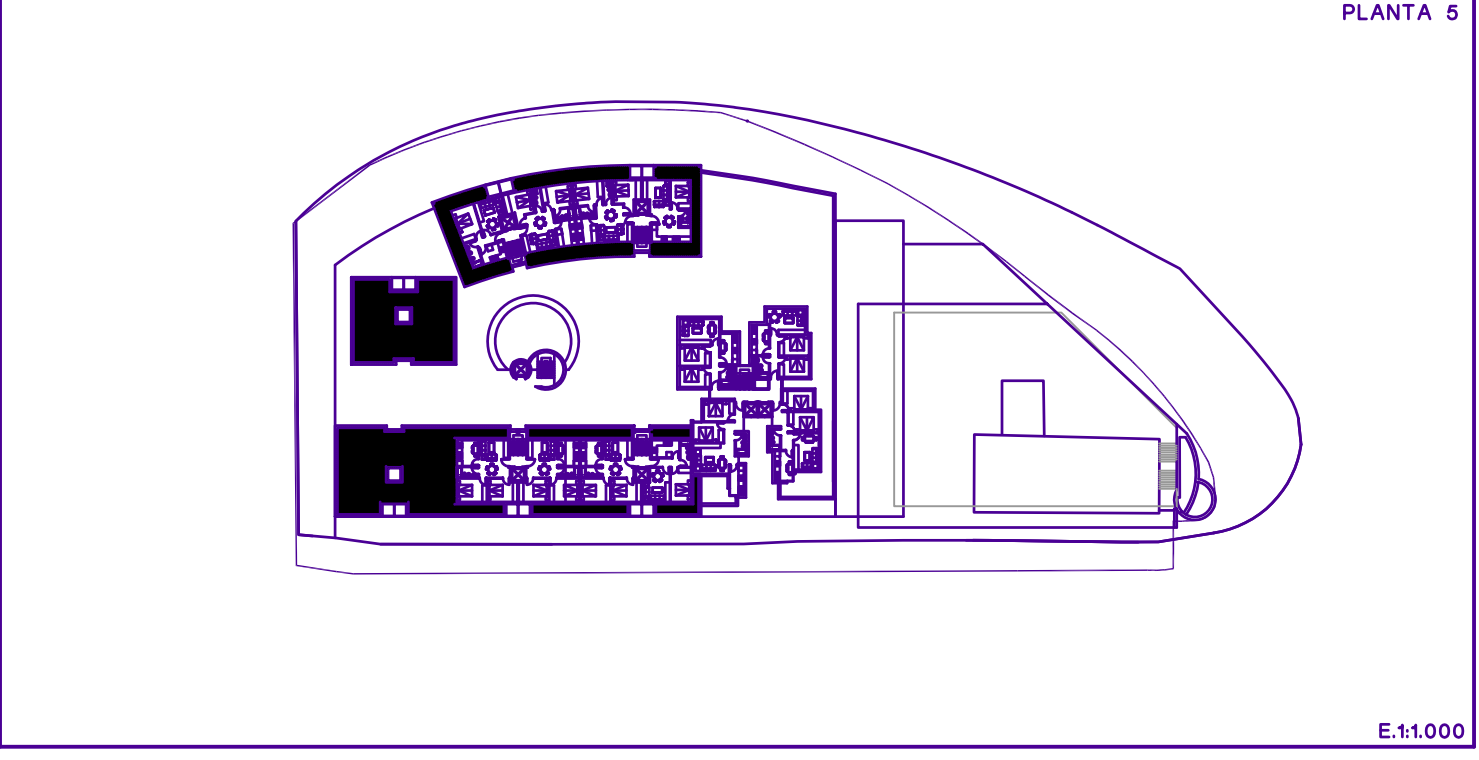
E.1:500



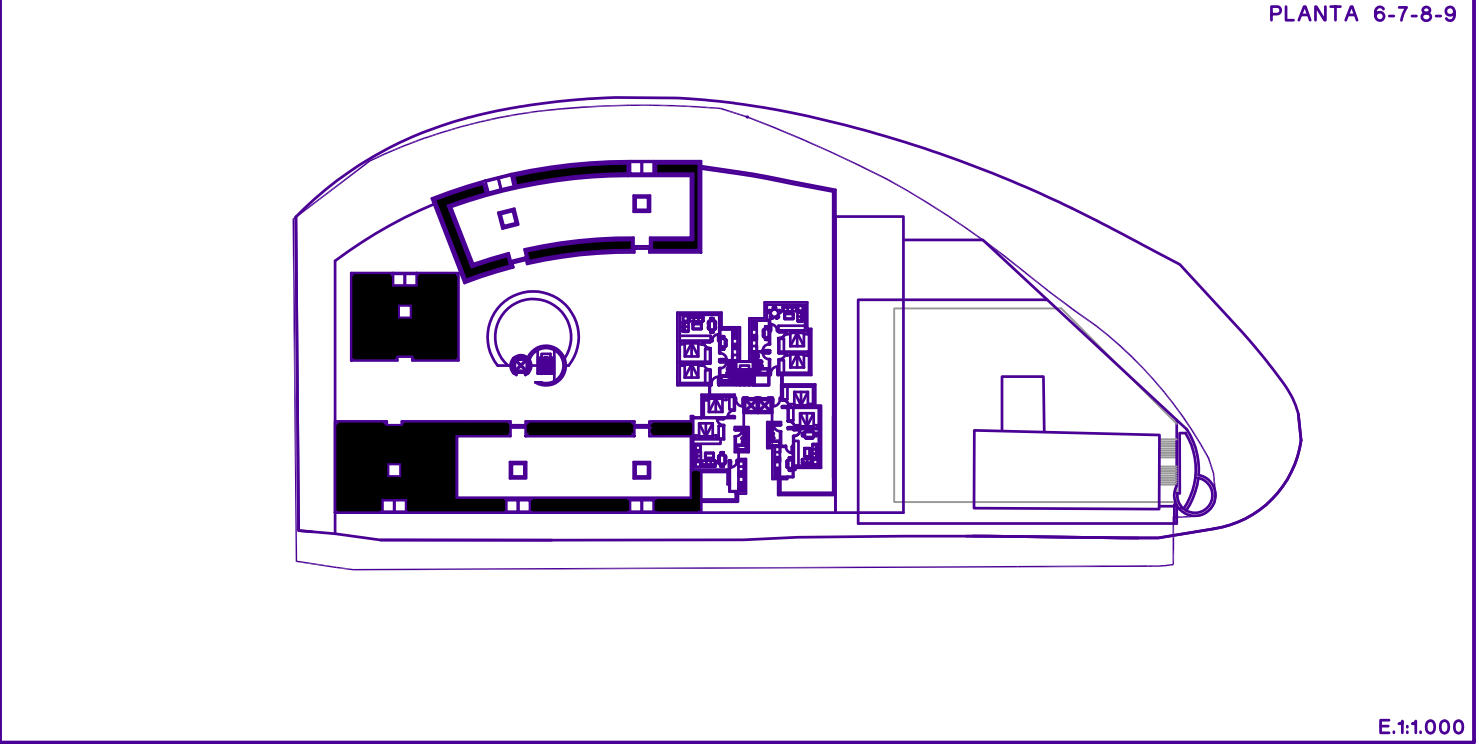
E.1:1.000



E.1:1.000



E.1:1.000



E.1:1.000



PROMUEVEN:	1.-CLAFI S.A.	2.-FAMILIA POLO
3.-D. ENRIQUE TRIAS CARRERAS	4.-D. JOSEBA-IMANOL ELOSUA	5.-ELOSUA-BASTERRECHEA Y OTROS
ARQUITECTO: ALBERTO POMBO RECONDO	ARQUITECTO COLABORADOR: JOSE E. URIBE AZAOLA	ABOGADA: MONICA ZARATE AGUIRRE

PLAN ESPECIAL DE REFORMA INTERIOR ZONA RECONDO-AVD. IPARRALDE		<b>P-7</b>
PERFILES Y SECCIONES DEL VIARIO Y LA EDIFICACION		
E 1:500		
IRUN ABRIL 2008		