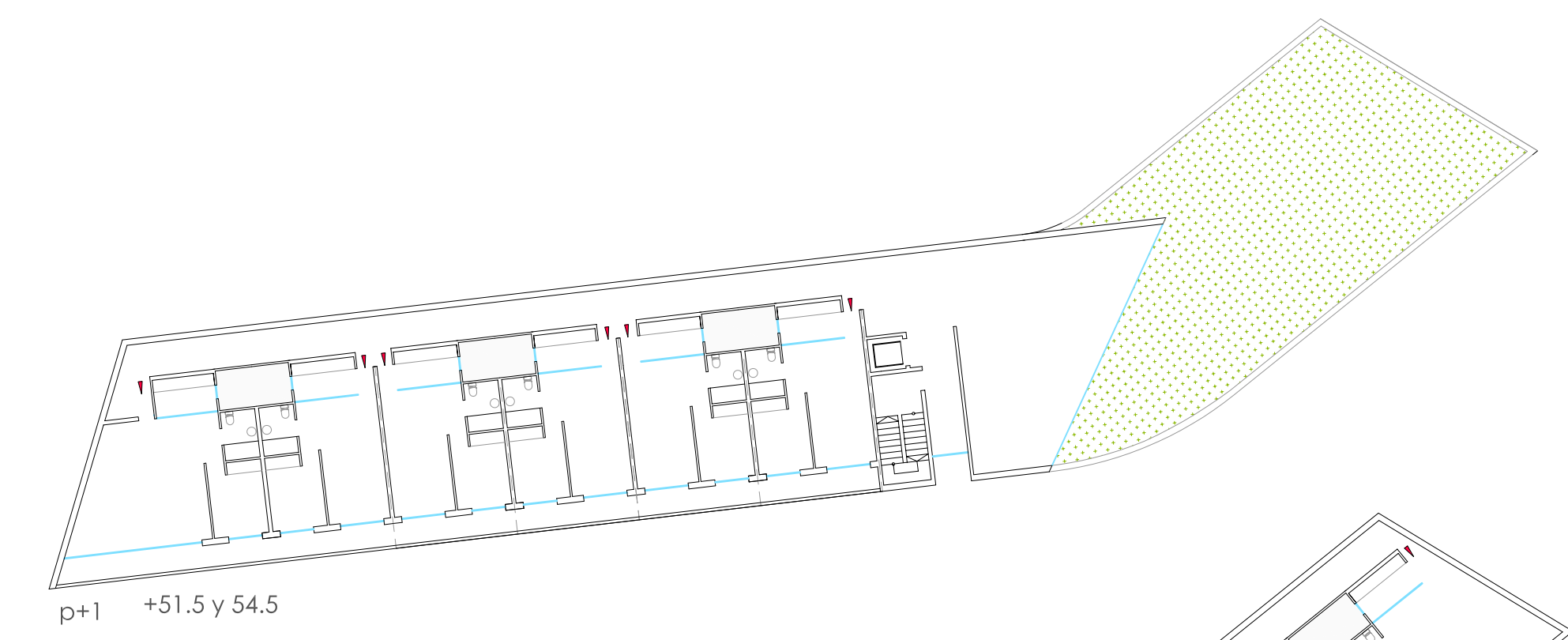
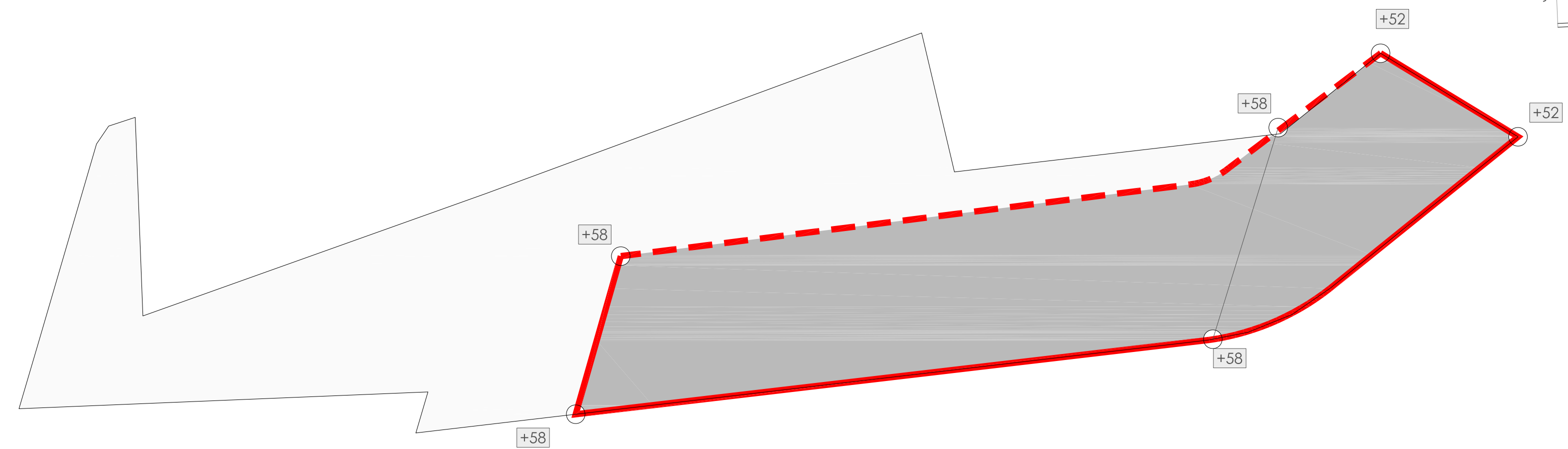


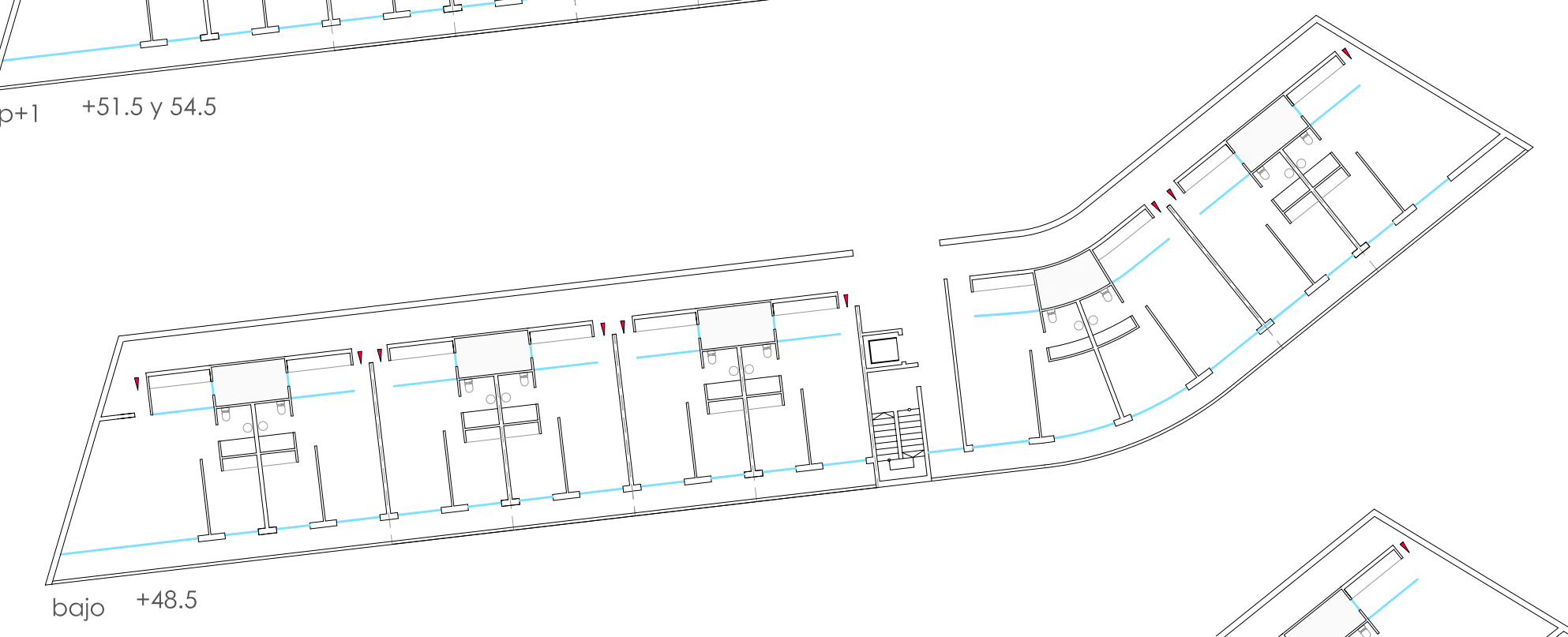
superficies:  
parcela 1.913 m<sup>2</sup>

sup construida vivienda 3502.15 m<sup>2</sup>  
sup construida aparcamientos 2823.28

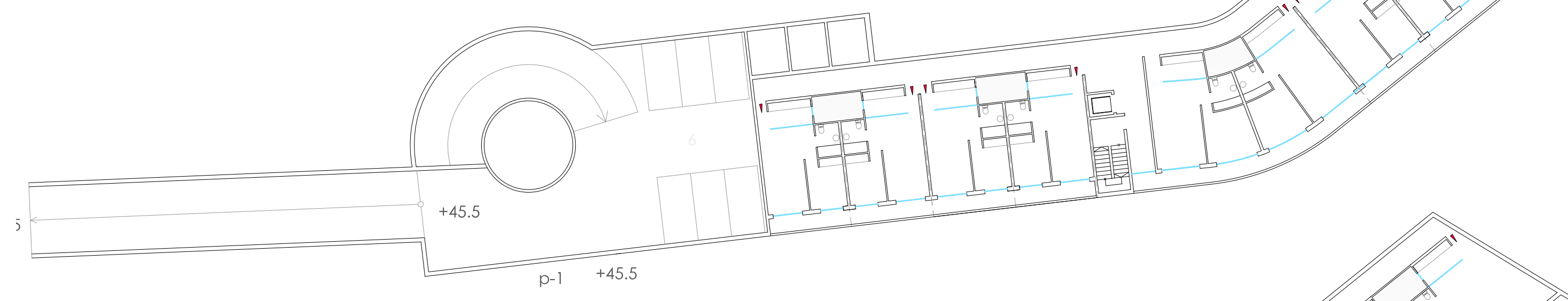
cantidades:  
nº viviendas: 38  
nº aparcamientos: 76



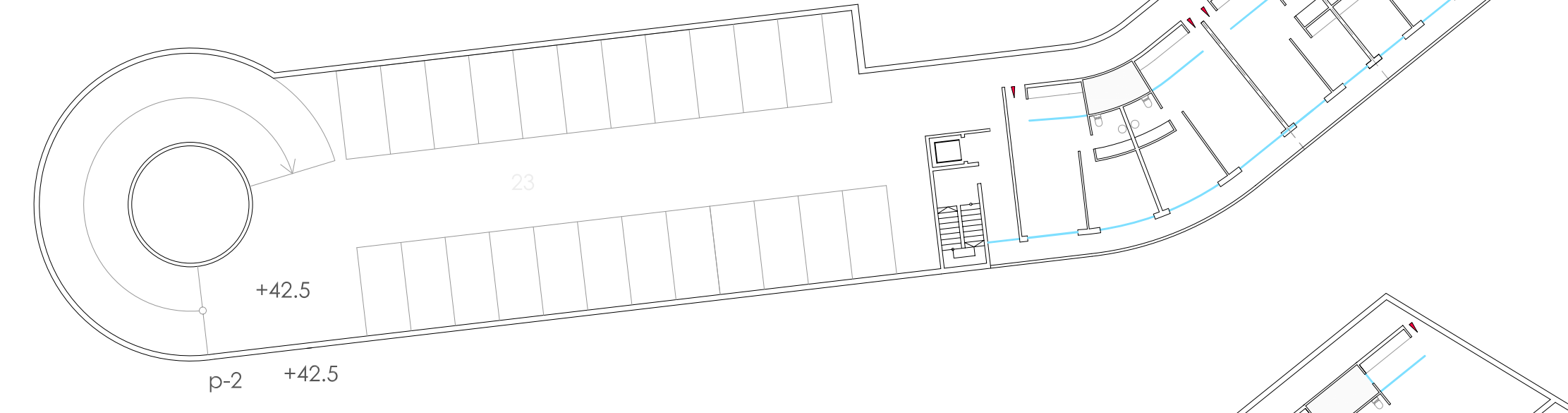
p+1 +51.5 y 54.5



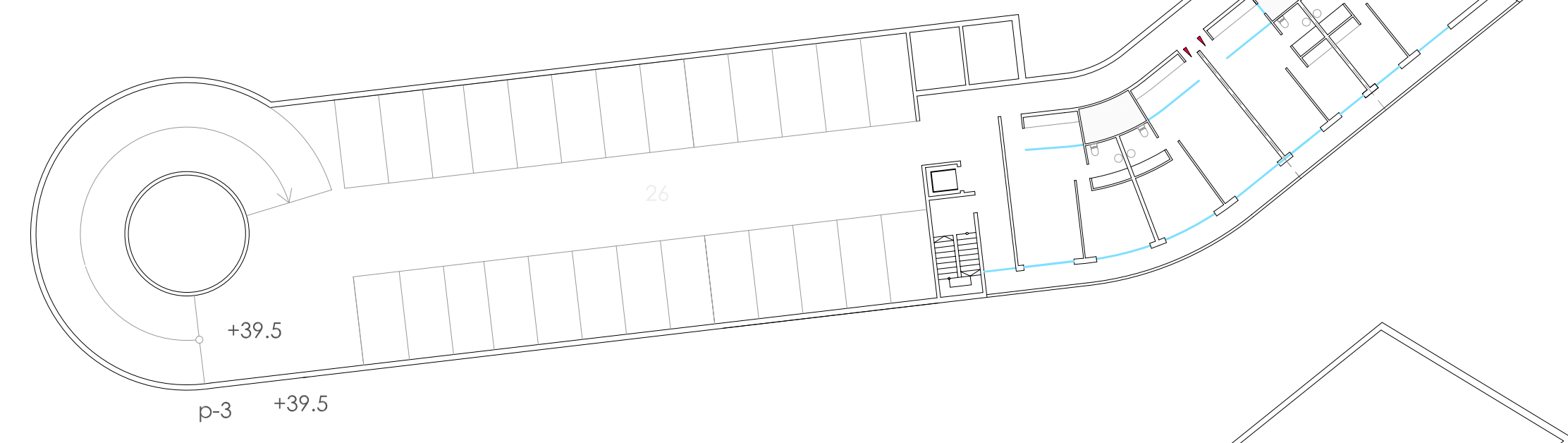
bajo +48.5



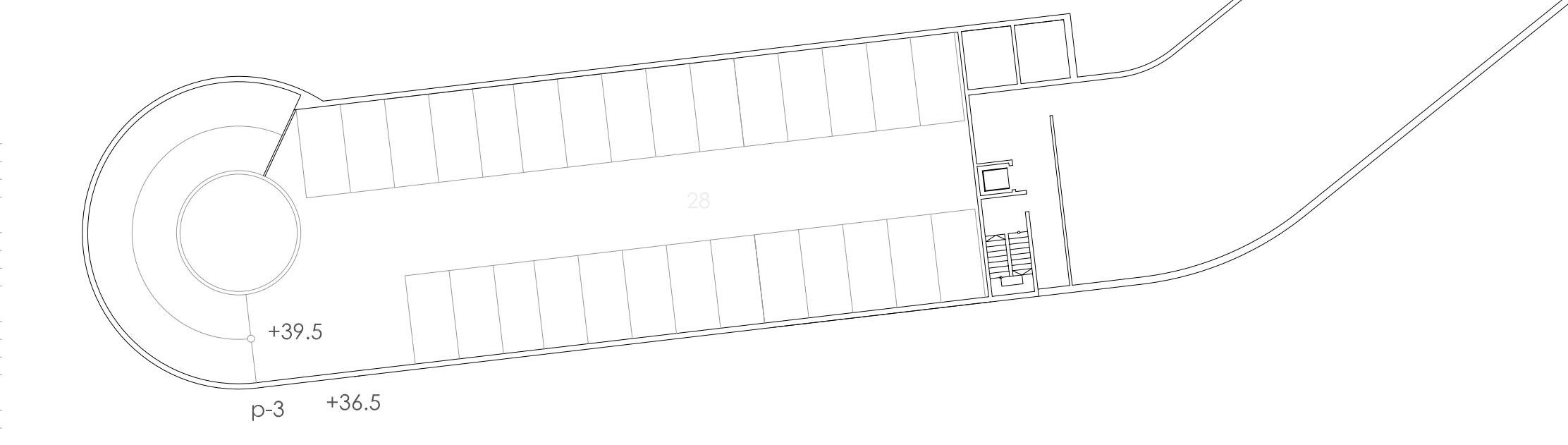
p-1 +45.5



p-2 +42.5



p-3 +39.5



p-3 +36.5

